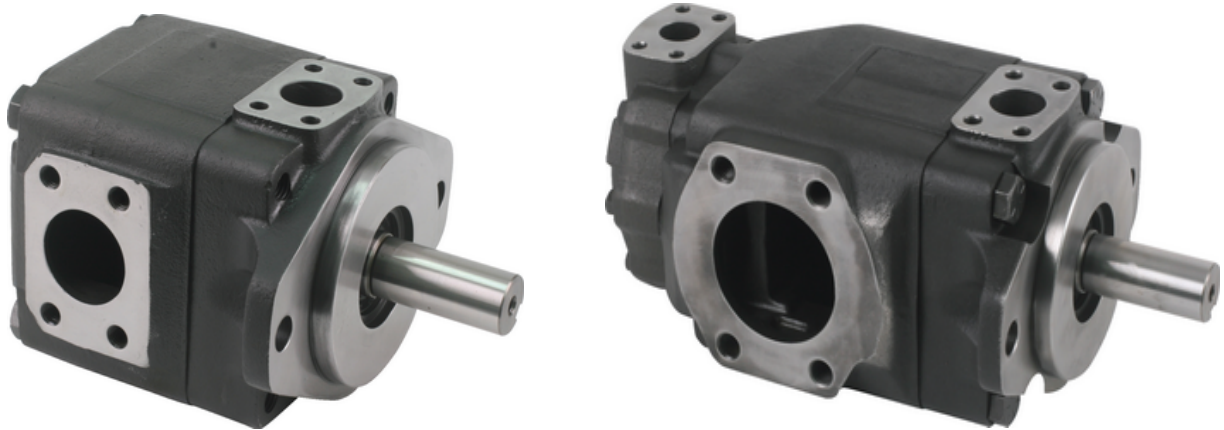


Parker Denison Hydraulic Vane Pump Cartridge Kits

Single vane pump T6C, T6D, T6E, T7E
 Double vane pump T6CC, T6DC, T6EC, T6ED
 Triple vane pump T6DCC, T6EDC, T6DDC



T6C*

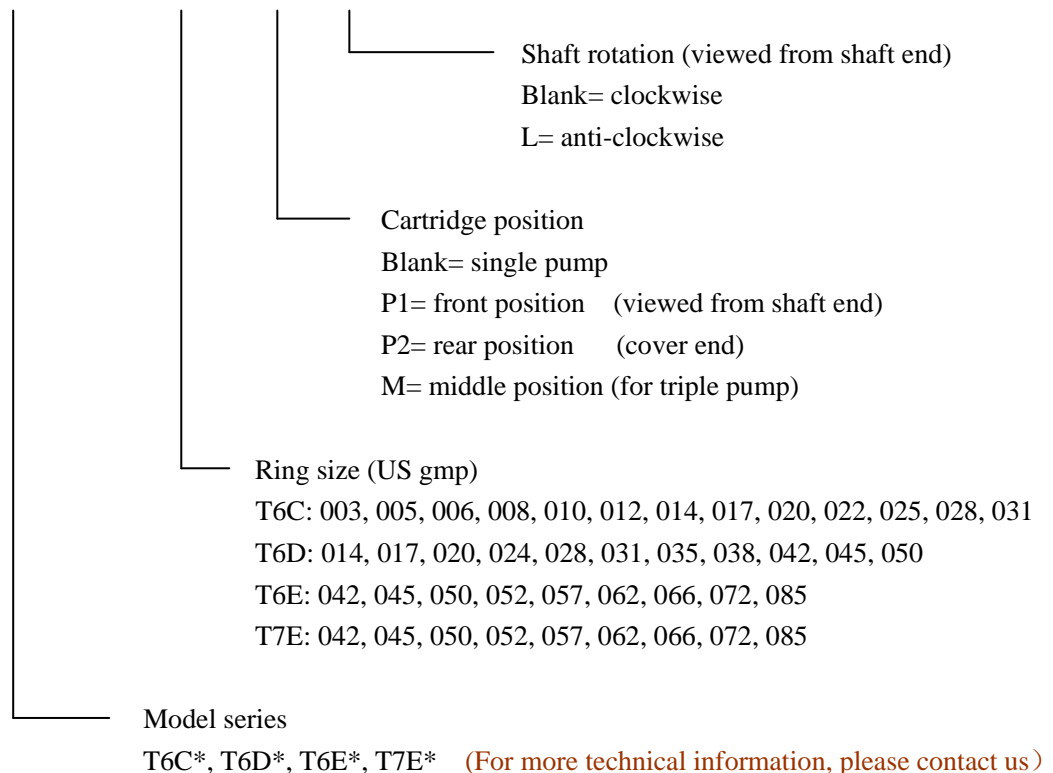
T6D*

T6E*, T7E*

The high pressure vane pumps incorporate the design of vane pin holdout. They are applicable for those hydraulic machineries that demand high rotation pressure and low noise level. The vane pump series are designed for applications in die casting machines, injection molding machines and other special construction equipments.

Ordering code:

T6C* – 022 – * – L



OEM Denison Vane Pump Cartridge Kits

www.dynacohydraulic.com

Pump Model	Description
T6C	Denison Single pump
T6CC	Denison Double pump
T6D	Denison Single pump
T6DC	Denison Double pump
T6E	Denison Single pump

Cartridge kits interchangeable with Denison

Cart.kit part no.	GPM	Description
S24-10692	3	Cartridge kit
S24-10694	5	Cartridge kit
S24-10696	6	Cartridge kit
S24-10698	8	Cartridge kit
S24-10721	10	Cartridge kit
S24-26478	12	Cartridge kit
S24-10723	14	Cartridge kit
S24-10725	17	Cartridge kit
S24-26859	20	Cartridge kit
S24-10727	22	Cartridge kit
S24-10729	25	Cartridge kit
S24-97761	28	Cartridge kit
S24-45785	31	Cartridge kit
S24-10731	3	Shaft end cartridge kit
S24-10733	5	Shaft end cartridge kit
S24-10735	6	Shaft end cartridge kit
S24-10737	8	Shaft end cartridge kit
S24-10739	10	Shaft end cartridge kit
S24-26509	12	Shaft end cartridge kit
S24-10741	14	Shaft end cartridge kit
S24-10743	17	Shaft end cartridge kit
S24-10745	22	Shaft end cartridge kit
S24-10748	25	Shaft end cartridge kit
S24-22510	28	Shaft end cartridge kit
S24-10749	3	Cover end cartridge kit
S24-10751	5	Cover end cartridge kit
S24-10753	6	Cover end cartridge kit
S24-10755	8	Cover end cartridge kit
S24-10757	10	Cover end cartridge kit
S24-26482	12	Cover end cartridge kit
S24-10759	14	Cover end cartridge kit
S24-10761	17	Cover end cartridge kit
S24-10763	22	Cover end cartridge kit
S24-10765	25	Cover end cartridge kit
S24-25547	28	Cover end cartridge kit
S24-33849	14	Cartridge kit
S24-26486	20	Cartridge kit
S24-97784	24	Cartridge kit
S24-10837	28	Cartridge kit
S24-10839	31	Cartridge kit
S24-10841	35	Cartridge kit
S24-10843	38	Cartridge kit
S24-10845	42	Cartridge kit
S24-10847	45	Cartridge kit
S24-40028	50	Cartridge kit
S24-40791	14	Shaft end cartridge kit
S24-26490	20	Shaft end cartridge kit
S24-25891	24	Shaft end cartridge kit
S24-10849	28	Shaft end cartridge kit
S24-10851	31	Shaft end cartridge kit

Cart.kit part no.	GPM	Description
S24-10853	35	Shaft end cartridge kit
S24-10855	38	Shaft end cartridge kit
S24-10857	42	Shaft end cartridge kit
S24-10859	45	Shaft end cartridge kit
S24-40236	50	Shaft end cartridge kit
S24-10767	3	Cover end cartridge kit
S24-10769	5	Cover end cartridge kit
S24-10171	6	Cover end cartridge kit
S24-10773	8	Cover end cartridge kit
S24-10775	10	Cover end cartridge kit
S24-26480	12	Cover end cartridge kit
S24-10777	14	Cover end cartridge kit
S24-10779	17	Cover end cartridge kit
S24-40234	20	Cover end cartridge kit
S24-10781	22	Cover end cartridge kit
S24-10783	25	Cover end cartridge kit
S24-97722	28	Cover end cartridge kit
S24-10177	45	Cartridge kit
S24-40645	50	Cartridge kit
S24-10179	52	Cartridge kit
S24-10181	62	Cartridge kit
S24-10183	66	Cartridge kit
S24-40026	72	Cartridge kit
S24-10205	45	Shaft end cartridge kit
S24-10207	52	Shaft end cartridge kit
S24-10209	62	Shaft end cartridge kit
S24-10211	66	Shaft end cartridge kit
S24-10767	3	Cover end cartridge kit
S24-10769	5	Cover end cartridge kit
S24-10171	6	Cover end cartridge kit
S24-10773	8	Cover end cartridge kit
S24-10775	10	Cover end cartridge kit
S24-26480	12	Cover end cartridge kit
S24-10777	14	Cover end cartridge kit
S24-10779	17	Cover end cartridge kit
S24-40234	20	Cover end cartridge kit
S24-10781	22	Cover end cartridge kit
S24-10783	25	Cover end cartridge kit
S24-97722	28	Cover end cartridge kit
S24-10205	45	Shaft end cartridge kit
S24-10207	52	Shaft end cartridge kit
S24-10209	62	Shaft end cartridge kit
S24-10211	66	Shaft end cartridge kit
S24-26492	20	Cover end cartridge kit
S24-25893	24	Cover end cartridge kit
S24-10861	28	Cover end cartridge kit
S24-10863	31	Cover end cartridge kit
S24-10865	35	Cover end cartridge kit
S24-10867	38	Cover end cartridge kit
S24-10869	42	Cover end cartridge kit
S24-10871	45	Cover end cartridge kit

Dynaco Hydraulic Co., Ltd.

Tel: 0086 25 85360418 Fax: 0086-25-89428524

Email: nbgears@163.com ; nbgears@dynacohydraulic.com

Web: www.dynacohydraulic.com